

VPN – Windows 10

To create the VPN connection to the UoE network you will need to connect to the secure website and install Pulse Secure. The VPN software allows you to connect securely to the University network as if your device was directly connected.

IMPORTANT - You will require administrative rights on *your computer* to complete the initial installation of Pulse Secure. These are not required once the installation is complete.

Initial setup of VPN service.

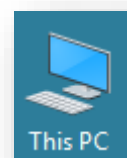
Open your web browser and navigate to <http://as.exeter.ac.uk/it/network/vpn/>
 Look for the correct version of windows 10 – the majority of windows machines are 64bit ones.

Operating System	Junos Pulse Client Software	How to Connect to the VPN
Windows XP / 7 32 bit	Windows 32bit Client 5.07	Click here for instructions
Windows XP / 7 64-bit	Windows 64bit client 5.07	Click here for instructions
Windows 8 / 8.1 32-bit	Windows 32bit Client 5.07	Click here for instructions
Windows 8 / 8.1 64-bit	Windows 64bit client 5.07	Click here for instructions
Windows 10	Windows 32bit Client 5.1	
Windows 10	Windows 64bit Client 5.1	
Microsoft Surface Pro		Click here for instructions
Mac OS X	Mac Client 5.07	Click here for instructions
iOS (iPhone 4, iPad 2 and iOS v 6.1.3 onwards)	iOS (iPhone, iPad)	Click here for instructions
Android (Samsung Galaxy, HTC One)	Android (Samsung Galaxy, HTC One)	Click here for instructions
Linux	Network Connect Version 7.4 for Linux	Click here for instructions *
Linux 64 bit		Click here for instructions

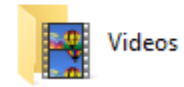
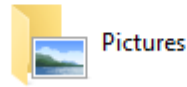
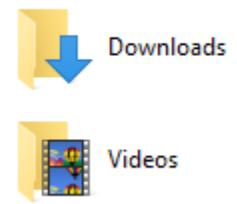
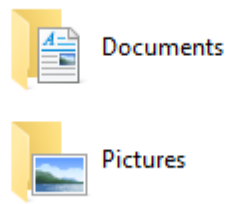
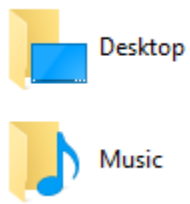
Click on the correct version of software (highlighted). This will begin the downloading of the required software.

Obtaining Pulse Secure


Once you have clicked on the software it will download by default to the “Download” folder. This is located by clicking on the “This PC” icon.



In the window opened by clicking the above icon look for the folder called “Downloads”. As show below.



You will have downloaded a file titled “*ps-Pulse Secure-win-5.1r4.0-b60057-64installer*”
As shown below:

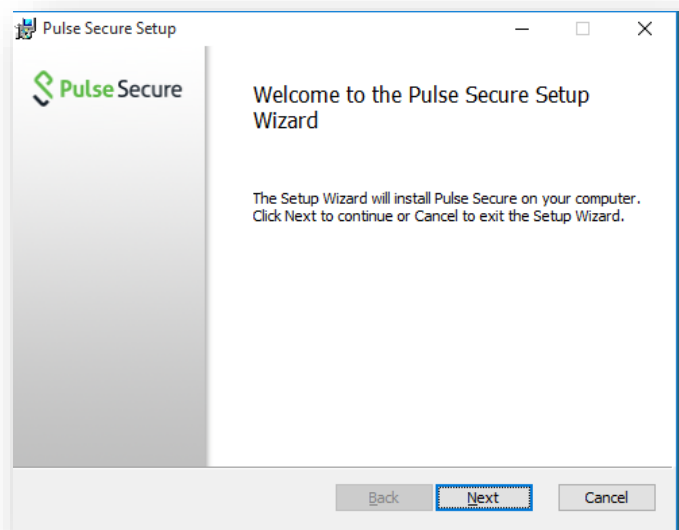
Name	Date modified	Type	Size
 ps-pulse-win-5.1r4.0-b60057-64bitinstaller	01/10/2015 08:18	Windows Installer ...	16,353 KB

Right click and choose Install.

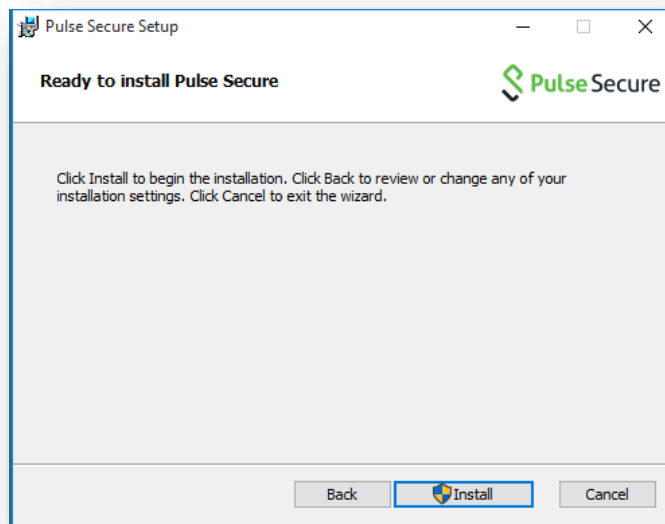
If you are using the 32 bit version – the file name will be *ps-pulse-win-5.1r4.0-b60057-32bitinstaller* – right click on the file and choose the *Install* option.

Installing Pulse Secure

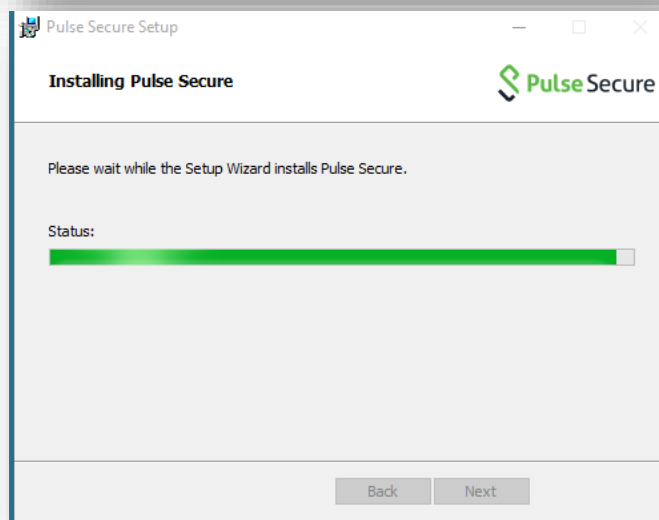
The install procedure will begin.
Choose next,



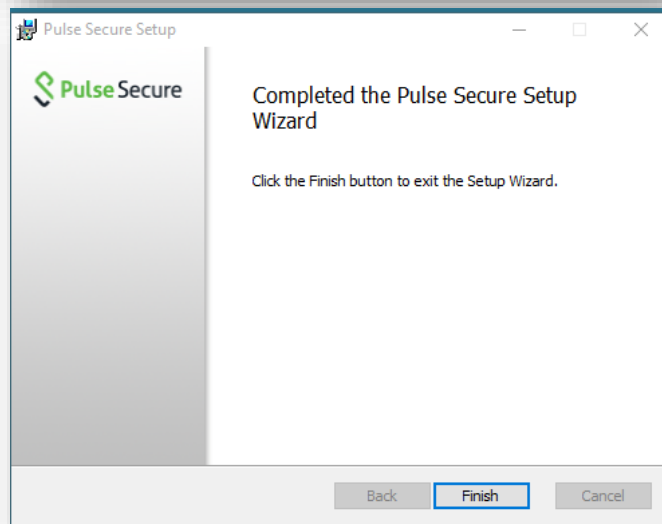
Then choose Install



The installation should only take a few minutes.



Click on Finish.



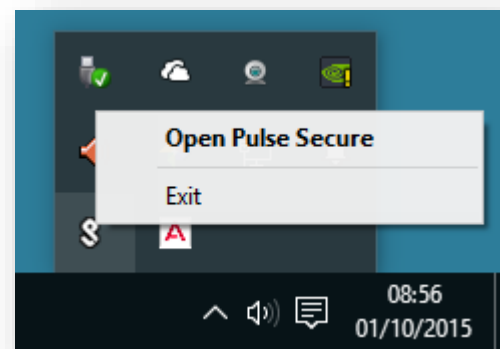
Secure is now installed on your Windows 10 machine.

You may see it on the task bar as shown, or it may be in the hidden icon section of the task bar.

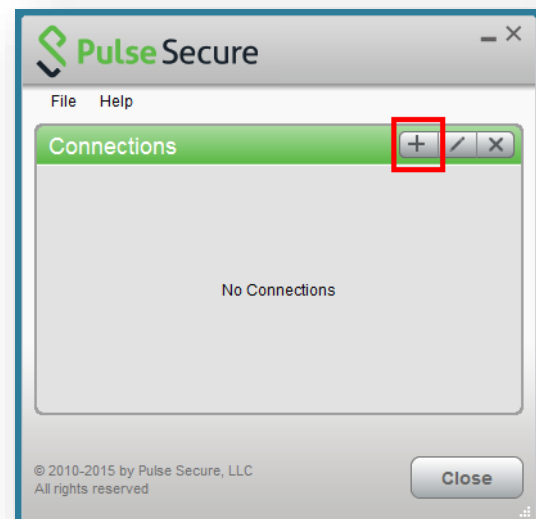


Once you have located the icon for Pulse Secure.

Left click on it and select **“Open Pulse Secure”**



From this screen you need to choose the + icon to add a new VPN connection.



This will allow you to now manually enter the location for the VPN to connect to:

The settings are:



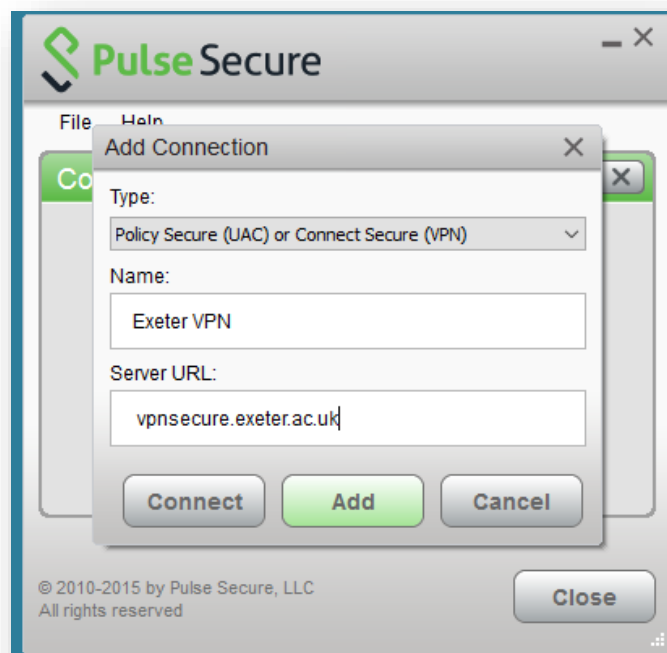
Name : **Exeter VPN**

Server URL: **vpnsecure.exeter.ac.uk**

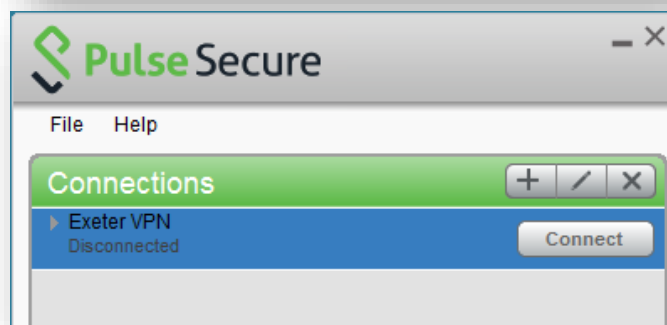


Now **Click Add**.

This information will not need be added on subsequent connections.



To connect to the University VPN **click the connect** button.



You will be prompted for your University Username and Password. Keep these secure.

Using Pulse Secure

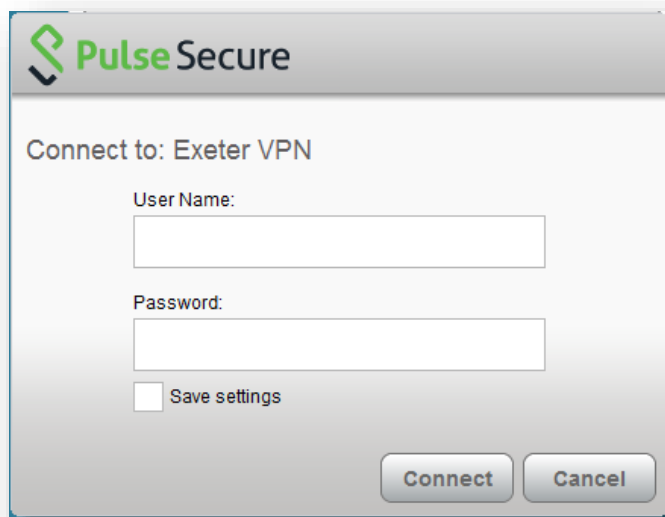
After installation, the Pulse Secure client will load automatically every time you start windows.

However, in the future, it will **not connect** to the University VPN unless prompted. You can connect in one of two ways:

- Visit the vpnsecure.exeter.ac.uk website and enter your login details this will then start the software automatically.
- Click on the Pulse Secure client on your computer and click Connect, for the Exeter entry.

You will be prompted for your username and password to complete the logging on.

- It is NOT recommended that you Save Settings for security reasons



Important information when using the VPN service

Once connected, your device will have a secure tunnel to the University network, and will be allocated a UoE network address. It will effectively be treated as directly connected to the University network.

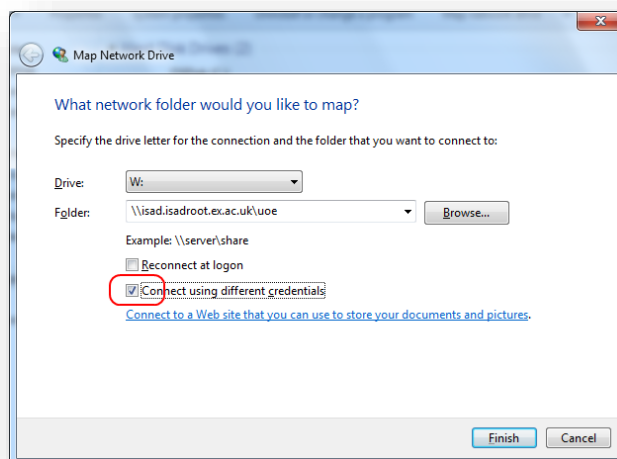
You will be able to access various internal resources such as mapped network drives and other internal systems not accessible from outside the University network.

Unless specifically requested otherwise, all the network traffic your device generates during an active VPN session will travel via the secure tunnel and the University network. This is useful to know when accessing external resources that will only permit access from known University network addresses.

Mapping a network Drive

If you use a VPN connection from a University laptop, your network drives (U:, N:, etc.) should already be mapped. If you are using a personal computer however, you will need to map this manually.

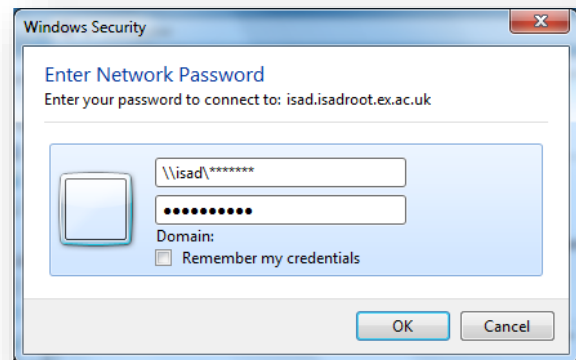
Click on the Start button and then 'Computer'
Click on 'Map Network Drive' from the top menu bar, select a drive letter and then in the 'folder' box, enter [\\isad.isadroot.ex.ac.uk\uoe](https://isad.isadroot.ex.ac.uk/uoe).



Because you are using a home computer, you will need to click on 'Connect using different credentials'

Enter your University username (preceded by ISAD\) and your password.

This will give you a drive mapping to the root folder. You will then need to navigate to your relevant department that you have access to.



Please note that it may take up to 30 seconds for your network drives to connect successfully after the Pulse Secure client has connected.