

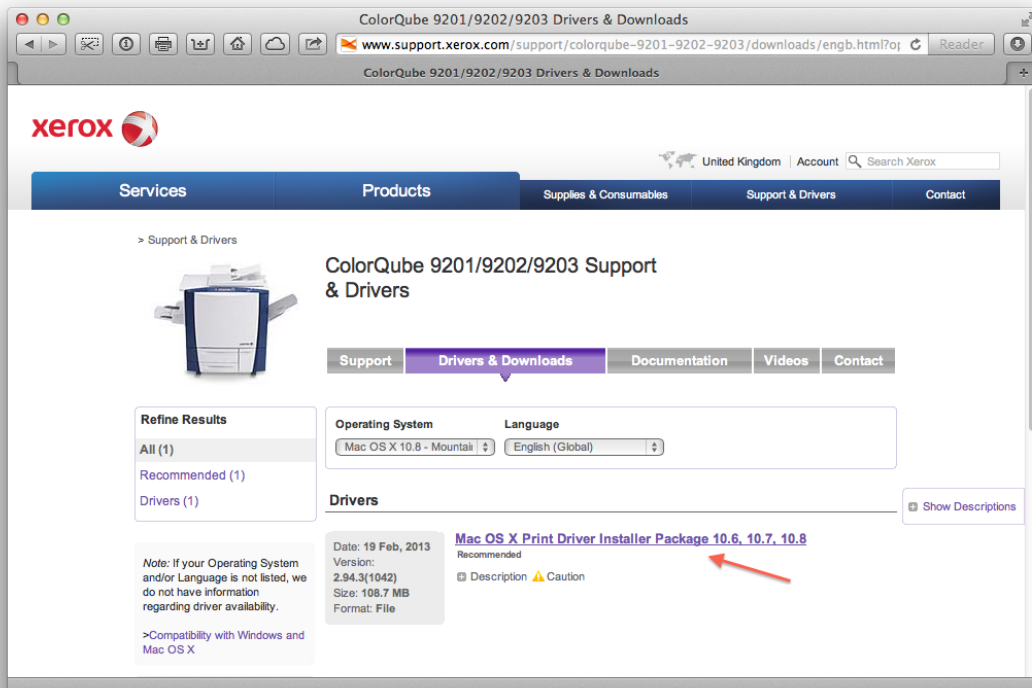
Adding Xerox Printers For Macs

Installing the Printer driver

In a non-AD environment, the global print driver used by the FollowYou queues is not available, and therefore it would be advisable to download the driver specific to the device you will use.

The model name is physically printed on the front of the printer; for example my printer is a 'Xerox ColorQube 9201'

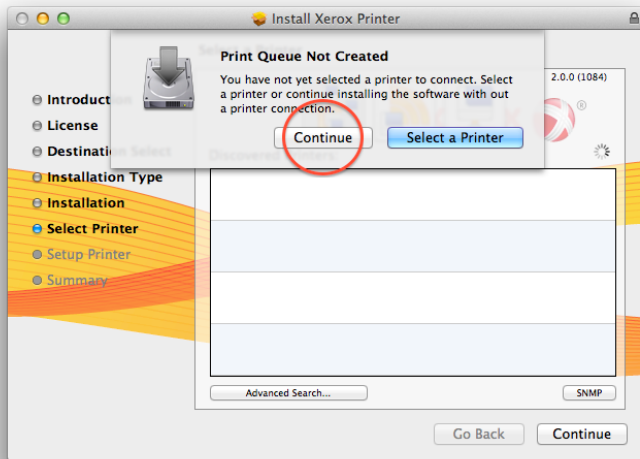
Download the driver disk image (.dmg file) from <http://www.support.xerox.com/support/engb.html>



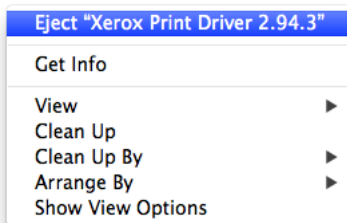
Click the Printer Driver disk image (.dmg file) from the 'downloads' folder on the Dock to mount it, and then double-click the installer that appears to run it.



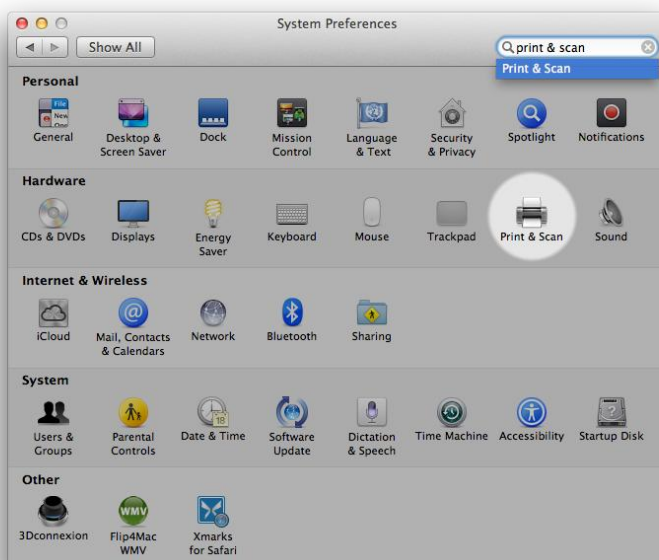
Click 'continue' without selecting a printer, we will add the print queue information later.



Follow the remaining instructions. After the driver has finished installing, eject the disk image. Right click (ctrl-click or two-finger tap) the disk image window empty space and choose 'Eject', then close the web browser.

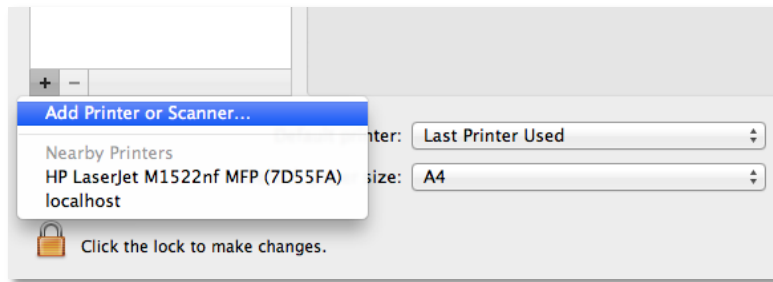


Click the Apple menu (top left of screen) and choose 'System Preferences' then click 'Print & Scan'

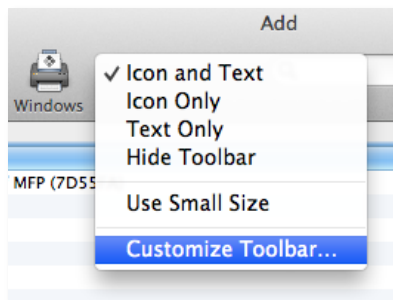


Click the lock to make changes (unless already unlocked), and enter an 'administrator' username and password.

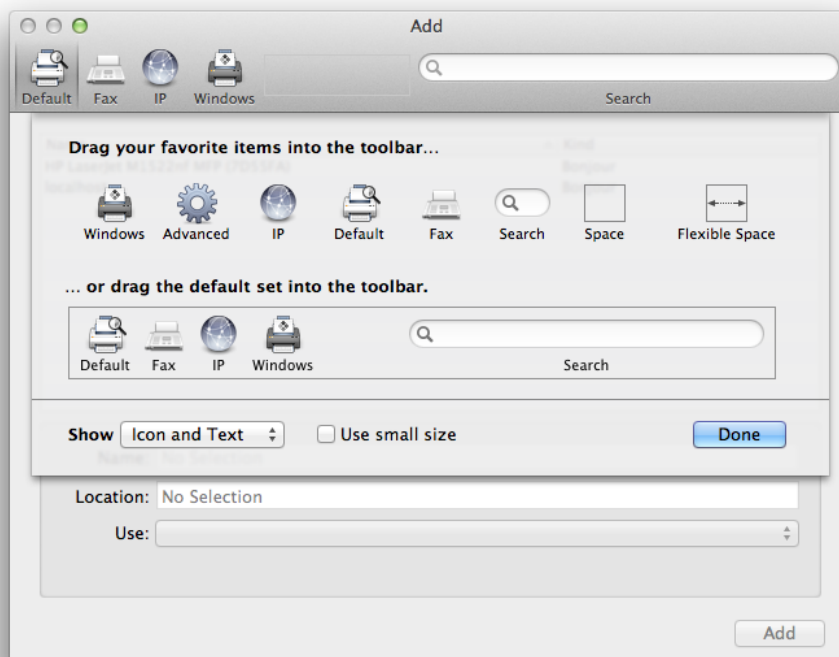
Click '+' then click 'Add Printer or Scanner...'



Right click on the grey area of the toolbar next to the Windows icon and choose 'customise toolbar'



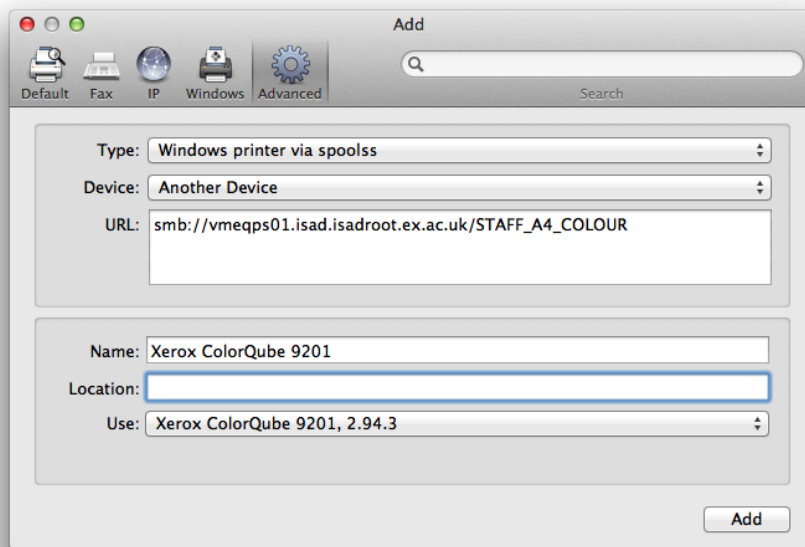
Drag the 'Advanced' item to the toolbar at the top of the window into the faint rectangle box, and click 'done'.



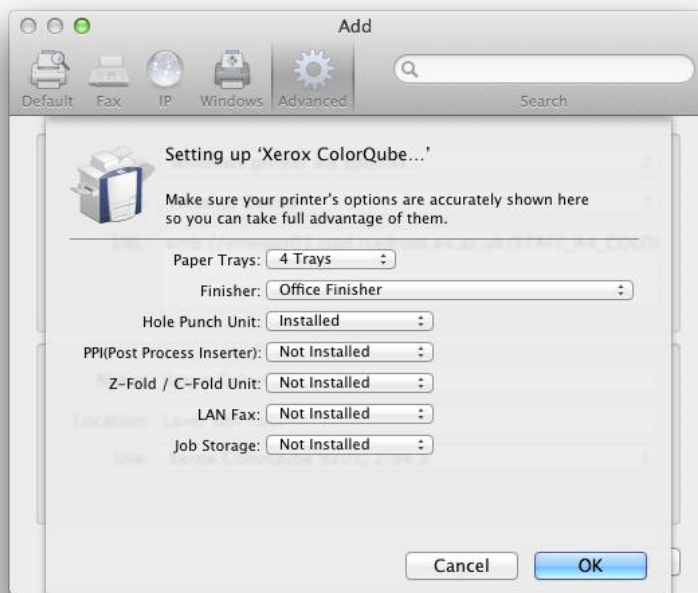
Click the 'Advanced' icon and enter the settings below, cut and paste the desired queue name listed below into the URL field.

smb://vmeqps01.isad.isadroot.ex.ac.uk/STAFF_A4_COLOUR
smb://vmeqps02.isad.isadroot.ex.ac.uk/STAFF_A3_COLOUR
smb://vmeqps01.isad.isadroot.ex.ac.uk/STAFF_A4_MONO
smb://vmeqps02.isad.isadroot.ex.ac.uk/STAFF_A3_MONO

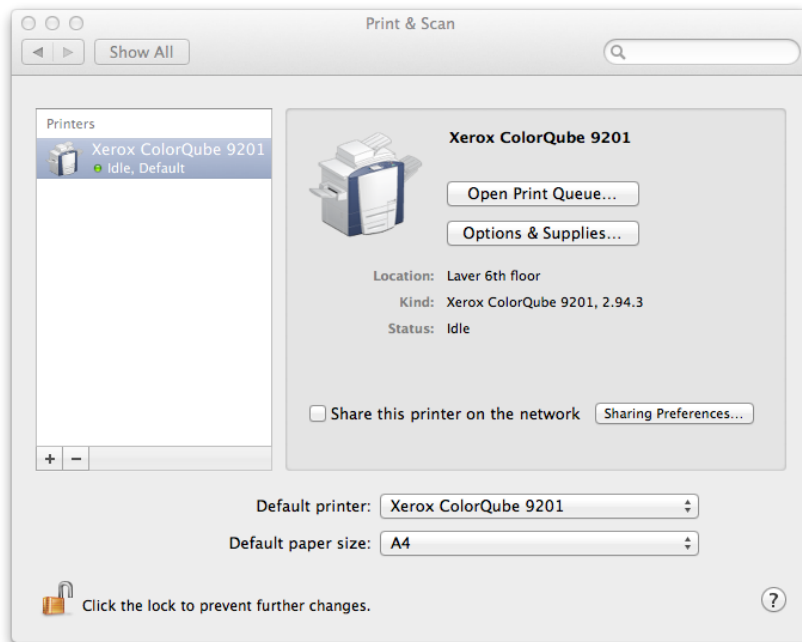
Select the correct printer driver using the dropdown menu in the 'Use' field.



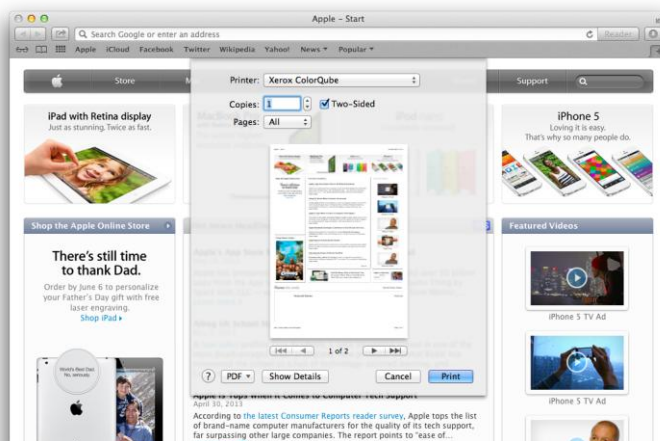
Now configure the capabilities of your printer. The settings below are recommended standard settings for most printers.



If everything has gone to plan, you should see your printer listed in the Print & Scan preference pane.



Print a test page from the Safari web browser to test the printer.



The computer will ask for the users University username and password to talk to the printer. Tick the 'Remember this password in my keychain' tick box. This is an encrypted passwords file, and will allow the user to print without entering a username and password each time.

